

茶香趣 茶日趣



喝茶，是一種生活態度。泡一壺好茶，
佐一個故事，更是平凡中的幸福滋味。

在飲茶風氣盛行的中國和日本，有許多獨特的禮儀；
本特展串連記憶中的臺灣古味，與東洋風的日式茶香，
展區安排許多親子互動的趣味遊戲，邀您來一趟博物館，
體會不同國度的茶文化，領略新時代茶藝的藝術能量。

Tea, an attitude to life. A pot of tea, the rank and
file a story, it is extraordinary in the taste of
happiness.

In tea is rampant in China and Japan, there are
many unique rituals; special exhibition chained
memory ancient flavor, tea Japan Japanese
wind, exhibition arrangements many fun games,
parent-child interaction invite you to take a trip
to the museum experience the tea culture of
different countries, a taste of the new era of tea
art energy.

中日飲茶儀式特展
Special Exhibit of Chinese and Japanese Tea Ceremony in Pinglin

102.3/18.8/25

交通資訊 Getting Here

大眾運輸 搭乘捷運至新店站，轉搭 923 或綠 12 新店客運至坪林旅遊中心(坪林國中)站，步行約 5 分鐘可達。

自行開車 (一)從新店或宜蘭走省道臺 9 號公路，轉北宜公路或國道 5 號可達。
(二)由景美走 106 線道經木柵、深坑及石碇 106 乙線道，接闊瀨往坪林之產業道路可達。

Public Transportation Take the MRT to Xindian Station. Transfer onto the Xindian Bus Service, and take the 923 or Green 12 (G12). Get off at the stop for Pinglin Tourist Information Center (Pinglin Junior High School). The Museum is a 5-minute walk away.

By Car (1) From Xindian or Yilan, take Provincial Highway No. 9, then take the Taipei-Yilan Highway or National Freeway No.5 to reach the Museum.
(2) From Jingmei, take County Highway No.106 past Muzha, Shenkeng, and Shiding. Continue onto County Highway No.106B. Exit for Kuolai and continue onto the Industrial Road towards Pinglin.

茶香趣 中日飲茶儀式特展

展出地點 新北市坪林茶業館活動主題館

展出日期 102 年 5 / 18 至 8 / 25

開出地址 新北市坪林區水德里水聳淒坑 19-1 號

開放時間 平日 9:00-17:00 假日 9:00-18:00 (每月第 1 週週一為休館日)

洽詢電話 新北市坪林茶業博物館 02-2665-6035 #301

導覽資訊 定時導覽 每日上午 10 時、下午 3 時各一場

預約導覽 20 人以上團體可來電預約

活動詳情 新北市政府文化局網站 www.culture.ntpc.gov.tw

Facebook 新北市坪林茶業博物館

LET'S TEA

Special Exhibit of Chinese and Japanese Tea Ceremony in Pinglin

Location Theme Hall in Pinglin Tea Museum, New Taipei City

Dates February 2 to May 5, 2013

Hours Monday to Friday, 9AM to 5PM

Weekends and national holidays, 9AM to 6PM

The Museum is closed on Chinese New Year's Eve (2/9) and New Year's Day (2/10), as well as the first Monday of every month.

(If this date falls on a national holiday, then the Museum will instead be closed on the first Tuesday.)

Information Call Pinglin Tea Museum, New Taipei City,
02-2665-6035, Ext. 301

Guided Tours Regular tours are available daily at 10AM and 3PM.


Tours by appointment are available for groups of 20 people or more. Please call for reservations.

Event Details Cultural Affairs Department, New Taipei City

Government, www.culture.ntpc.gov.tw

Facebook Pinglin Tea Museum, New Taipei City



 新北市坪林茶業博物館

特別感謝

 中華茶藝聯合促進會
The Chinese Art Of Tea Craft Union

 文化部
MINISTRY OF CULTURE

 新北市政府
New Taipei City Government

 新北市政府 文化局
Cultural Affairs Department
New Taipei City Government

 新北市坪林茶業博物館
Pinglin Tea Museum, New Taipei City

中式茶藝禮儀

飲茶自古有之，茶也展現重情好客的傳統美德與禮節，一場正式茶會，除了重視服裝儀容，也要依長輩幼分來奉茶，本區除了展現傳統茶儀之內涵，亦介紹各式泡茶法的重要禮儀與文化。

蓋碗泡茶法

使用蓋碗飲茶時，左手要先拿起托碟，右手掀起蓋子，將碗蓋拿到鼻前聞聞香氣，接著再觀察茶湯色澤，享受視覺藝術的美。



Chinese tea etiquette

Tea since ancient times, tea is also to show the traditional virtues of Emotion hospitality and courtesy, a formal tea party, besides their clothes, but also according to their elders and young sub-serve tea, the area in addition to show the traditional Tea instrument connotation, also introduced all kinds of law tea etiquette and culture.

Tureen tea method

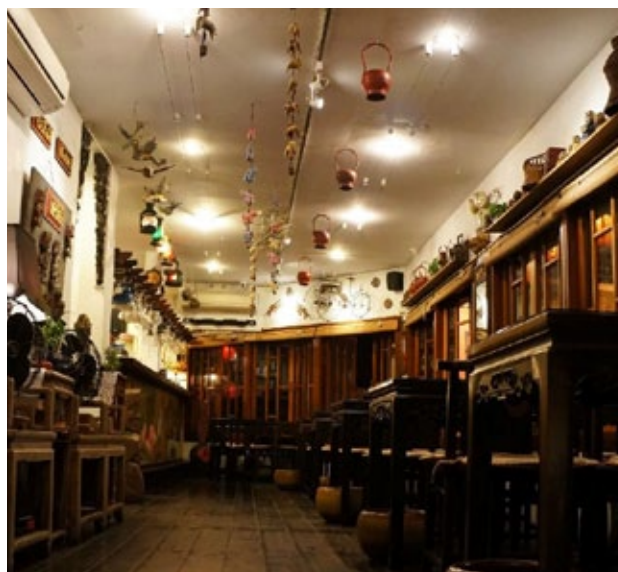
Tureen tea, the left hand first picked up the saucer, right hand off the lid, get the bowl lid and smell the aroma

小壺泡茶法

這是目前最普遍的泡茶方式，相對於早期大壺煮茶法稱之，此種現代式的泡茶法相當重視「水溫」、「茶葉量」和「時間」三要素；也視茶葉不同特性，搭配不同的壺具材質，其呈現的香氣及色澤亦不相同。

工夫茶泡茶法

工夫茶講究泡茶的技術，所須掌握的因素最多，其中牽涉茶藝的純熟度及講求現場互動的表演性，茶趣與茶品的流露也較為直接，此種泡茶法在中國廣東潮汕與福建漳泉地區十分流行。



茶的小秘密

- 茶盅與公道杯：有公平分享的衍生意義。
- 茶則：引申有準則，由茶葉罐中取茶，放入壺中心的器具，一般多為竹製品，具有賞茶、置茶、量茶、識茶的功能。
- 喝甜茶：新娘在訂婚、結婚時，要奉上甜茶，請男方長輩飲用。

The Gongfu tea making method

Gongfu pay attention to the technology of tea, you should know the most factors, which involves the mastery of tea and reveal more direct emphasis on live interactive performances, tea interesting tea, such tea in China Chaoshan Zhangzhou and Quanzhou, Fujian very popular.

Tea little secret

Teapots and fair cup: the significance of derivative fair share.
Tea: extended criteria, take tea caddy apparatus placed in the center of the pot.

日式茶道禮儀

日式茶道以抹茶道與煎茶道為主流，本區透過此兩大重要的茶道形式，強調通過品茶陶冶情操，用以修心養性，增進賓客雙方間的融洽關係；日式茶道的精神還延伸至其他生活品味，其中「掛畫」、「插花」、「焚香」、「點茶」，所謂的「生活四藝」，已經超越平日飲茶的文化，進入精神的層次了。

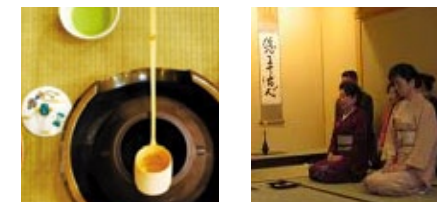
More generally for bamboo products, enjoy the tea, tea set, the amount of tea, know the function of the tea. Drink sweet tea: bride engagement, marriage, shall bring sweet tea drinking, male elders.

Japanese tea ceremony etiquette

The mainstream Japanese tea ceremony, Matcha Road and Sencha Road of the area through two important form of tea ceremony, emphasizing the tea cultivates the mind to spiritual cultivation, to promote the harmonious relationship between the guests; also the spirit

煎茶道

煎茶道將茶道與詩、樂結合，相當重視環境之間的和諧關係，其所用的茶器就是以壺為中心，結合側把的設計，考量恆溫性多使用瓷壺，杯子的設計較大，講究唇部與杯緣的觸感，器壁較厚，多直口設計。



of the Japanese tea ceremony extended to other lifestyle, "paintings", "flower arrangement", "incense", "some tea," so-called "living art", has gone beyond the weekdays tea culture into the spirit level.

Sencha Road

Sencha Road tea ceremony with poetry, music, attached considerable importance to the harmonious relationship between the environment, they use tea pot, combined with the design side, consider the thermostat to use

抹茶道

抹茶道所用的茶器是以茶碗為中心，通常黑色最能襯托茶色為貴，並使用茶筴；講究四規及七則，抹茶道相當重視禮儀，本區可以看到這些禮法的特有方式，這也是日本文化相當重要的美學觀。

more pots, the design of the cup, pay attention to the lip of the cup edge to the touch, thick wall, multi-straight port design.

Matcha Road

Matcha Road the tea is based bowl for the center, usually black best bring your brown and Chasen; pay attention to four regulations and seven, Matcha Road attaches considerable importance to etiquette, the area can see the unique way of these ritual law, this is also Japanese culture is very important aesthetics.